

# Nature<sup>2</sup>® Fusion Inground Tab Feeder Assembly Replacement Kit

## WARNING

**FOR YOUR SAFETY** - This product must be installed and serviced by a contractor who is licensed and qualified in pool equipment by the jurisdiction in which the product will be installed where such state or local requirements exist. In the event no such state or local requirement exists, the maintainer must be a professional with sufficient experience in pool equipment installation and maintenance so that all of the instructions in this manual can be followed exactly. Before installing this product, read and follow all warning notices and instructions that accompany this product. Failure to follow warning notices and instructions may result in property damage, personal injury, or death. Improper installation and/or operation will void the warranty.

Improper installation and/or operation can create unwanted electrical hazard which can cause serious injury, property damage, or death.

These instructions are to be used with the following Replacement Kit:

### R0502600 -- Nature2 Fusion Inground Tab Feeder Assembly Replacement Kit

This document gives instructions for installing the Nature<sup>2</sup> Fusion Inground Tab Feeder assembly.

For technical assistance, please contact our Technical Support Department at (800) 822-7933.

All of the instructions must be followed exactly. Read through these instructions completely before starting the procedure.

#### WARNING

To avoid personal injury when working with pool chemicals, always wear rubber gloves and eye protection, cover exposed skin, and work in a well ventilated area. Use caution when choosing a location to open and use chemicals as they may damage any surface into which they come in contact. If any chemical gets on your skin, rinse the area immediately with water. If any chemical gets on your clothing, immediately remove the piece of clothing and rinse with water.

#### DANGER

**CHEMICAL USE HAZARD:** The Nature<sup>2</sup> Fusion is designed to use only Trichloro-S-Triazinetrione tablets - slow dissolving type. **Never mix or use with other types of chlorine or chemicals.** Explosion or fire may result.

#### WARNING

To avoid injury or property damage from chlorinated water, add Tri-Chlor tablets slowly to avoid splashing.

### 1. Replacement of the Nature<sup>2</sup> Tab Feeder Assembly

1. Adjust output to zero (0) setting and turn on the filter pump and run for five (5) minutes.
2. Shut off the pool pump and filter.

#### WARNING

Always turn pump off prior to installing or removing any components from the pool's plumbing. Your pump/filter system is operated under pressure and pressure must be released before you begin to avoid system damage or personal injury. Open the air relief valve on your pool filter to release the pressure in the system.

3. Close valves between filter and pool to prevent pool draining.
4. Press tab on top of the handle to remove. Retain handle for installation onto new cap assembly. See Figure 1.
5. Turn the large collar counterclockwise to remove and save for reinstallation.



6. Remove the body from the chlorinator with caution so you do not splash water. If chlorine tablets are still present, remove chlorine tablets from body and set aside to be reused. See the chlorine tablet manufacturer's directions for the safe handling and first aid.
7. Remove the large O-ring and discard.
8. Install new tab feeder body. Add chlorine tablets to chlorinator. If you have chlorine tablets from the above procedure, add new tablet first and then the remaining partially used tablets. Care should be taken when adding tablets to the chlorinator to avoid splashing of chlorinated water.
9. Install the O-ring provided in the kit. Make sure the O-ring is seated properly.

**IMPORTANT**

Make sure the O-ring is secure in the groove on the vessel top, not on the underside of the cap.

10. Install the cap and hand tighten the large collar and reinstall the handle. Do not over tighten.
11. Turn pump on and check for leaks.
12. Set chlorinator output to proper level.

**2. Parts List**

The following table is for your reference. To order additional parts, please contact your local distributor.

DESCRIPTION	R0502600
Tab Feeder Assembly	1
O-Ring, Large Collar	1
Instructions	1

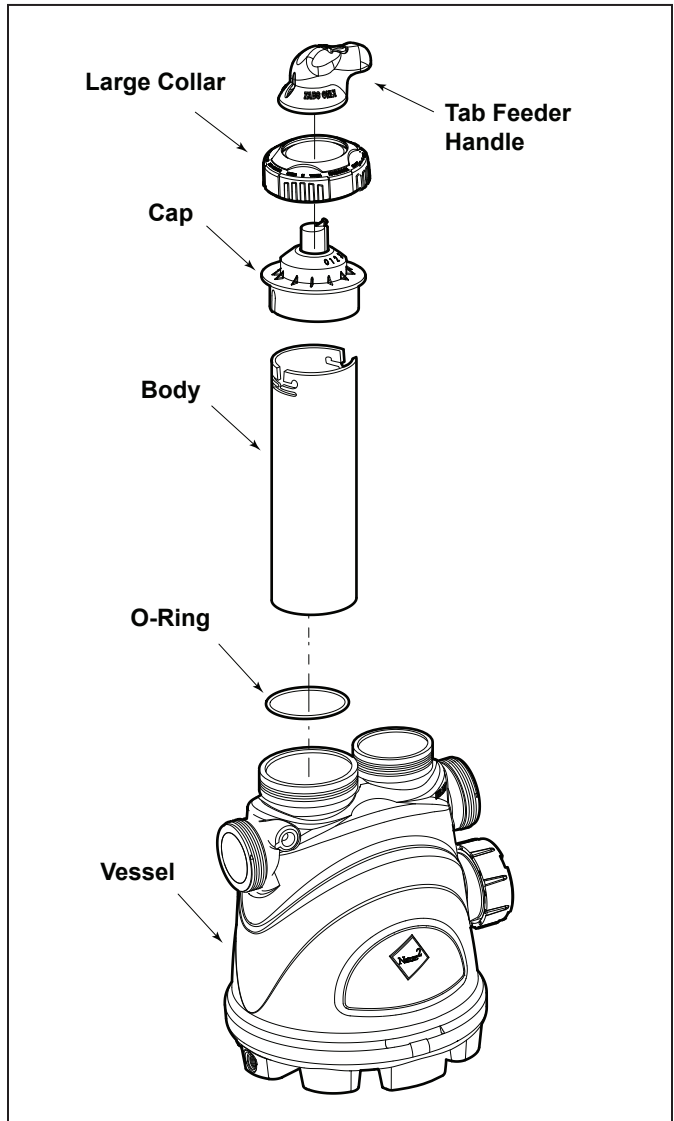


Figure 1. Installation of the Tab Feeder Assembly

